



*Kat*

*3d Editing by Brandon*

*Template by Paperbuff*

*for*

*www.nintendopapercraft.com*

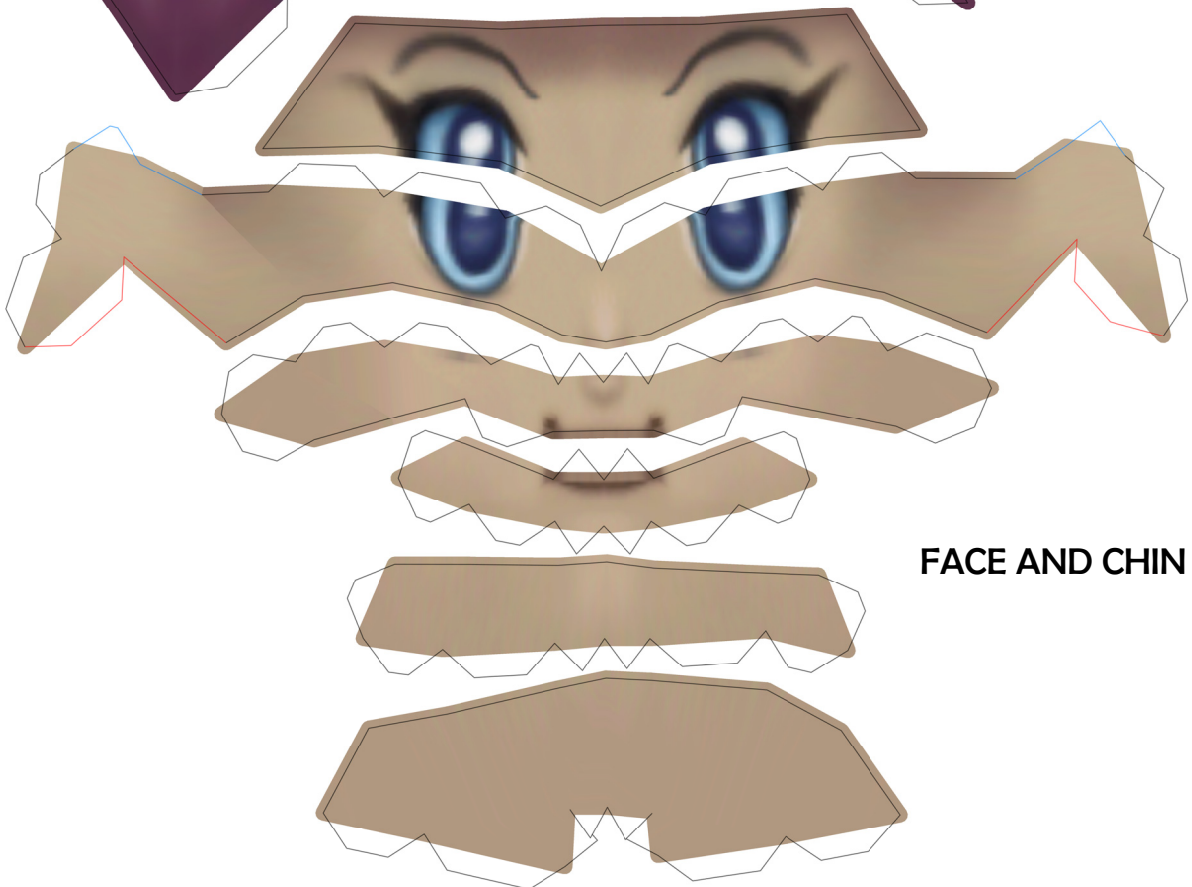
**HAIR (TOP)**



**LEFT  
SIDEBURN**



**RIGHT  
SIDEBURN**

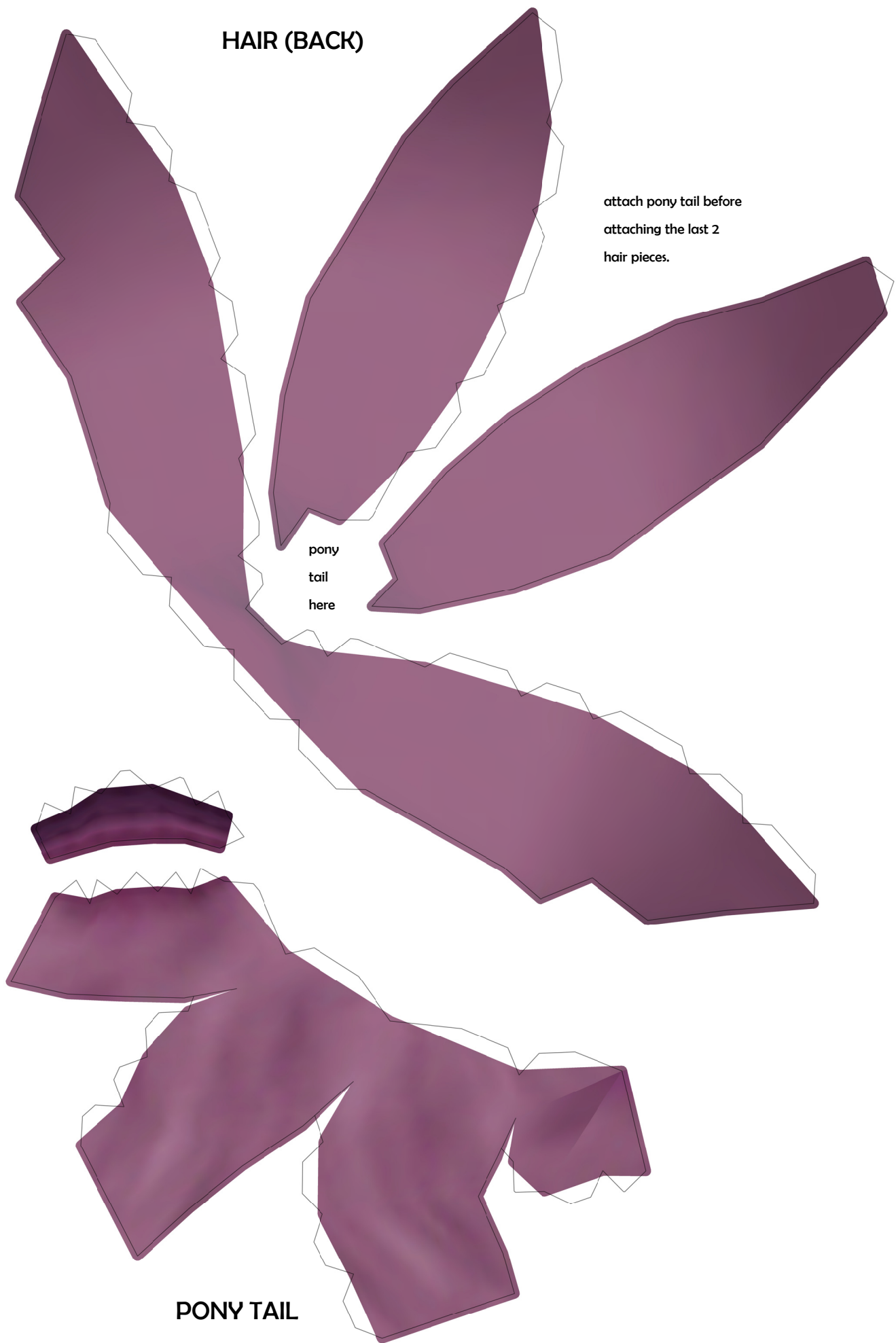


**FACE AND CHIN**

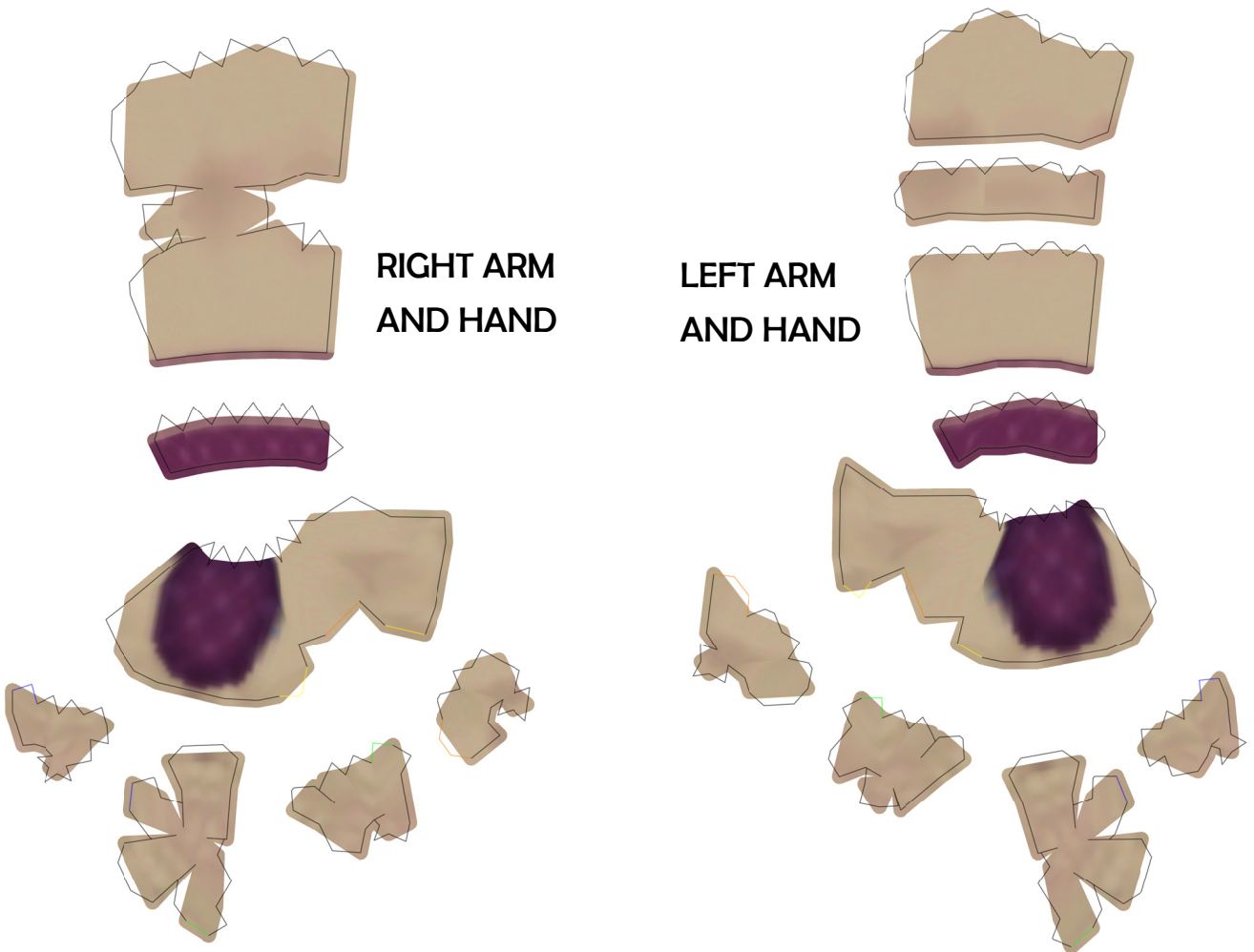
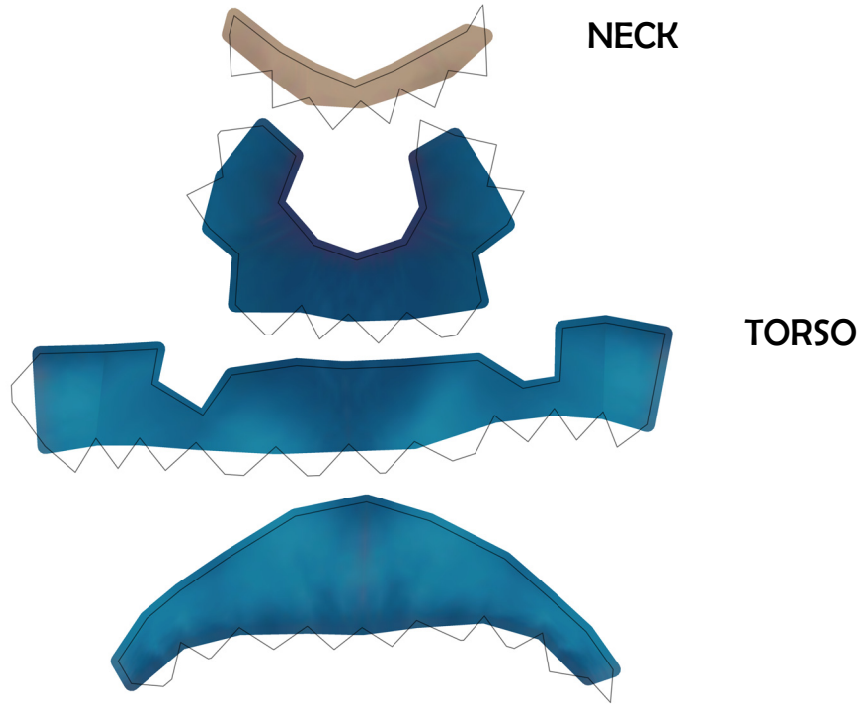
# HAIR (BACK)

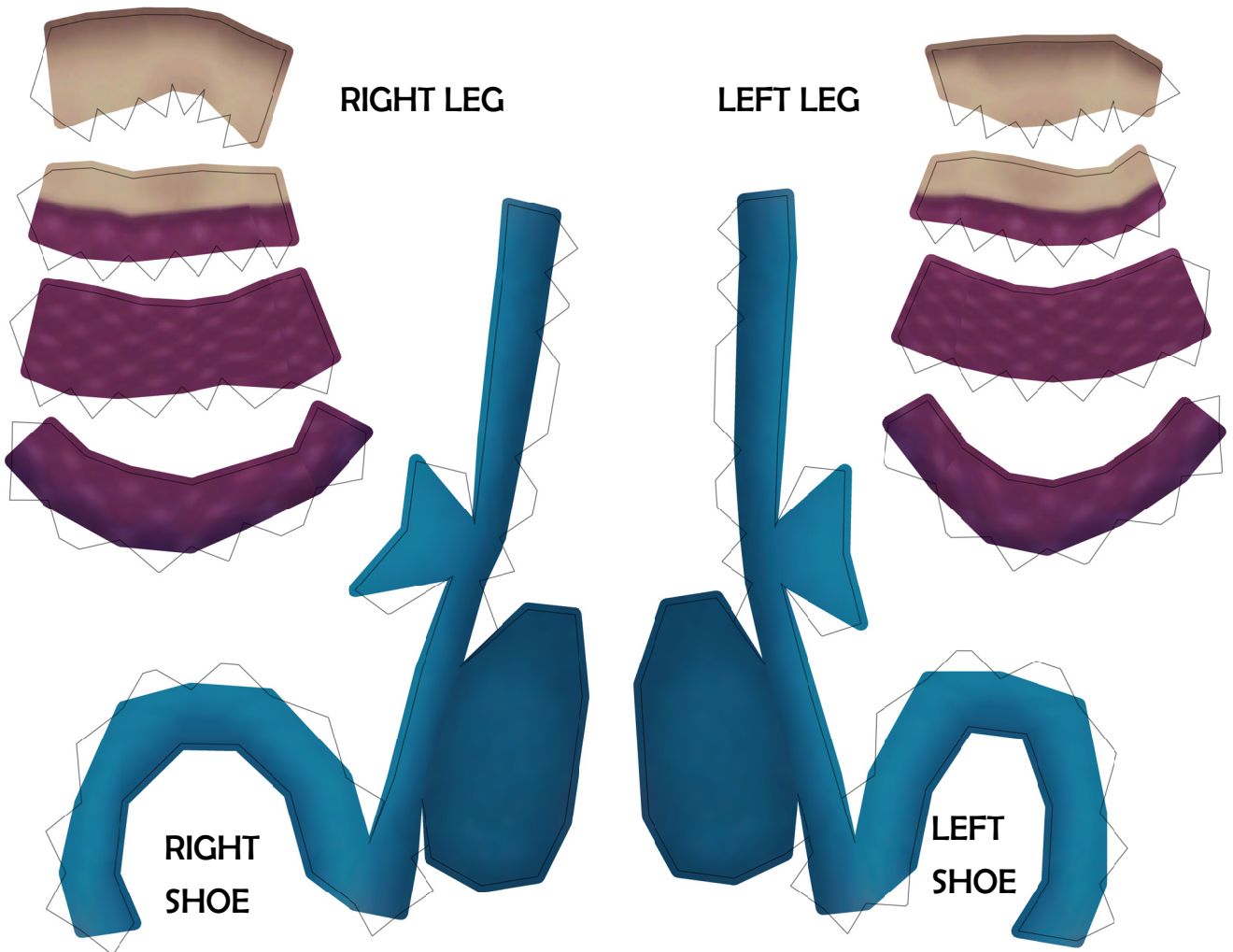
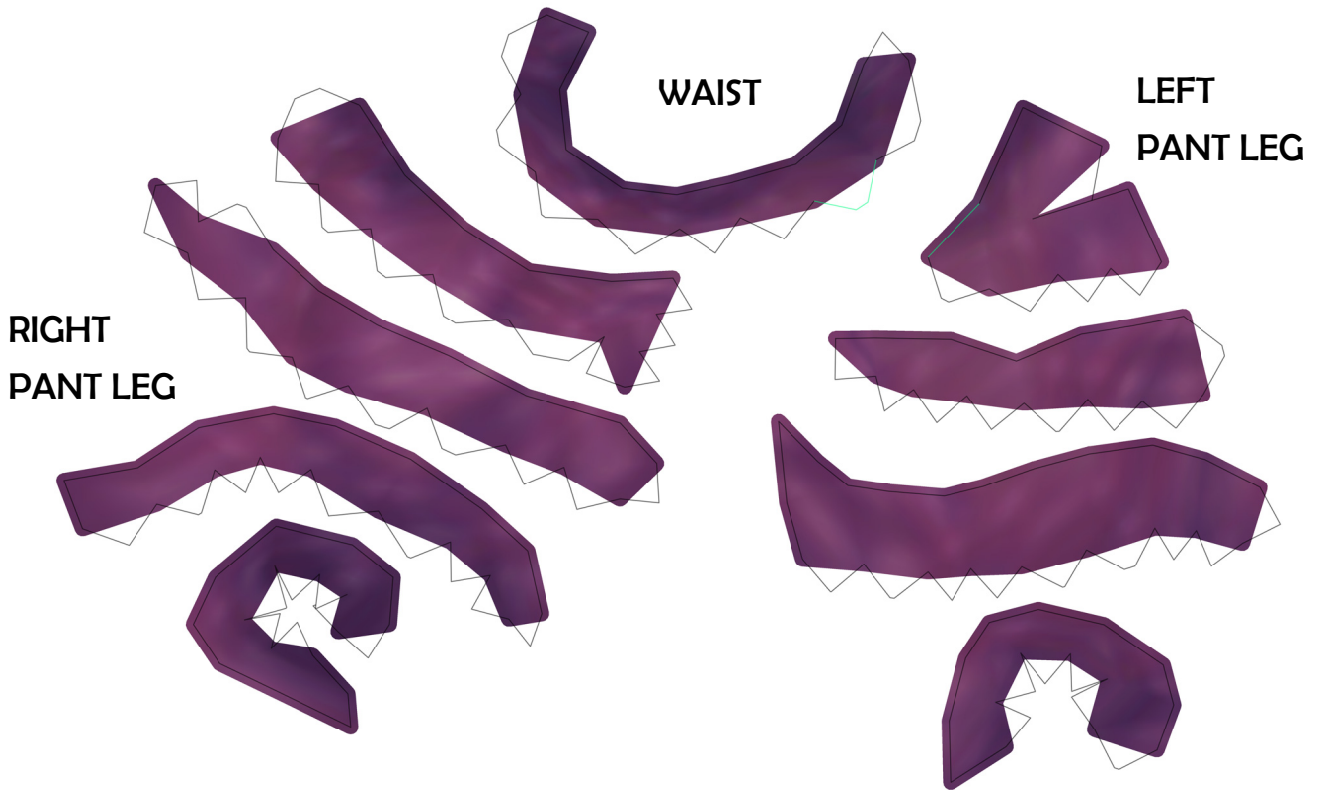
attach pony tail before  
attaching the last 2  
hair pieces.

pony  
tail  
here

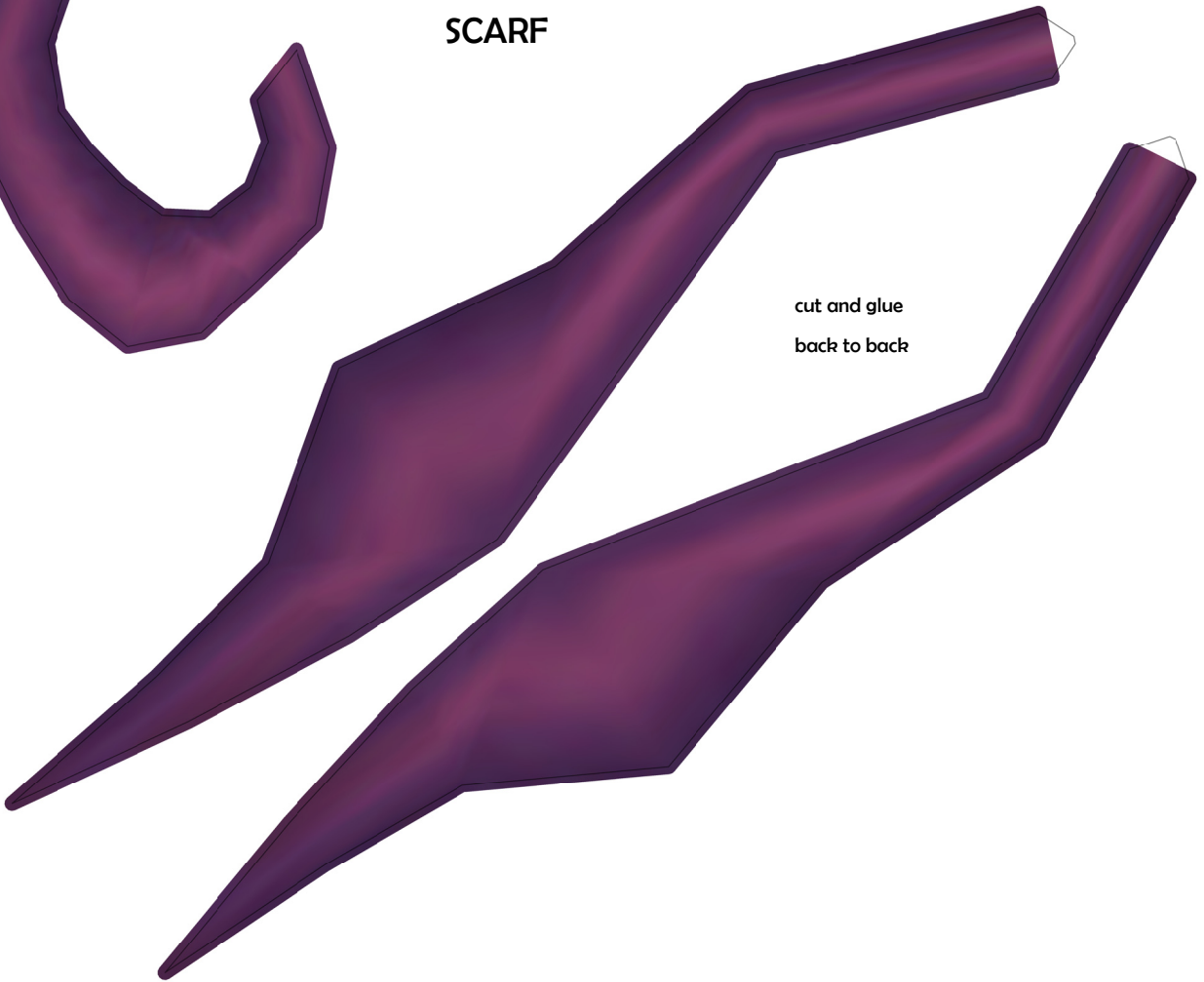


# PONY TAIL

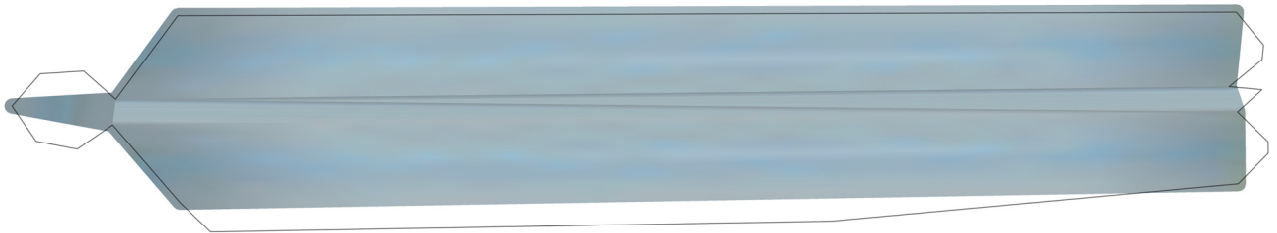




**SCARF**



cut and glue  
back to back



**KATANA**

